

4

3

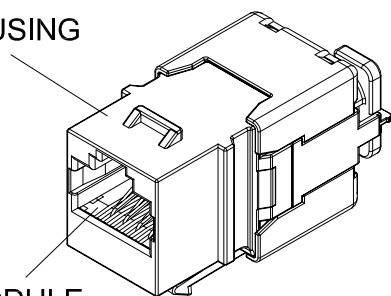
2

1

REVISIONS

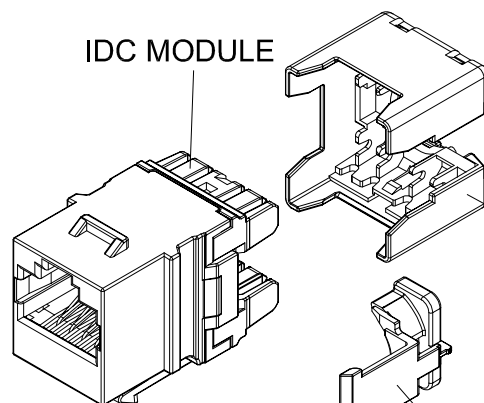
ZONE	REV	DESCRIPTION	DATE	DRAWN

JACK HOUSING



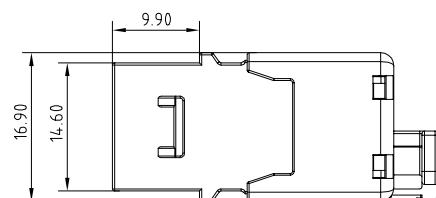
INSERT MODULE

IDC MODULE



WIRE CAP

CLIP

**TRANSMISSION PERFORMANCE**

Meet all requirements specified in connecting hardware requirement of ANSI/TIA-568-C.2, Category 5e

ELECTRICAL

Electrical Insulation Resistance : 500 MΩ min. @ 100V d.c

Dielectric Withstanding Voltage : 1000V d.c. or a.c. Peak Contact to Contact @ 60Hz for 1 minute, 1500V d.c. or a.c. Peak Contact to Panel @ 60Hz for 1 minute

MECHANICAL

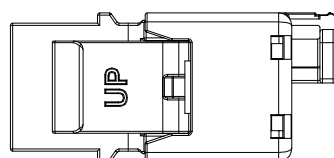
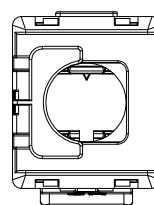
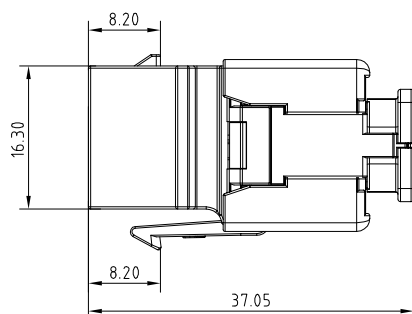
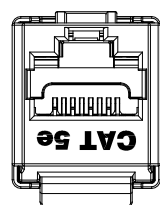
Insertion / Extraction Life : 750 Cycles Minimum
IDC Wire Gauge : 22 ~ 24 AWG

PHYSICAL

Housing : Zinc-alloy fully shielded
Spring Wire : Phosphor Bronze Alloy Plated With 50 micro-inch of Gold
IDC : Phosphor Bronze Alloy With 100 micro-inch 100% Sn Alloy

COMPONENTS

ITEM	PART NAME	QTY
1	JACK HOUSING	1
2	INSERT MODULE	1
3	IDC MODULE	1
4	WIRE CAP	1
5	CLIP	1



UNLESS OTHERWISE SPECIFIED: TOLERANCES		
INCH	MM	ANGULAR
.X ± .016	.X ± 0.2	X ± 1°
.XX ± .008	.XX ± 0.1	X ± .5°
.XXX ± .004		
MATERIAL		
SURFACE		
FINISH		

PROJECT ID
16B-F5-07SL

FILE

DATE

TITLE

FTP module
category 5e keystone

DRAWN

CHECK

APPROVED

SIZE

DRAWING NUMBER

PART NUMBER

REV

SCALE

1 : 1

UNIT

mm

SHEET