

4

3

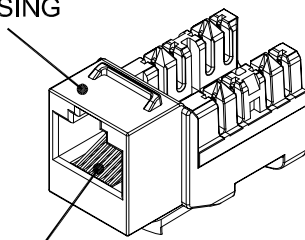
2

1

## ISOMETRIC VIEW

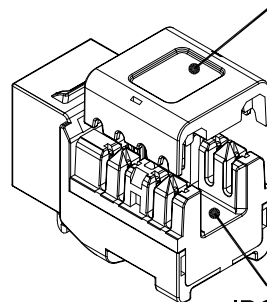
JACK HOUSING

INSERT MODULE

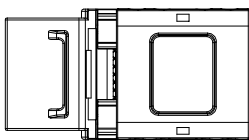
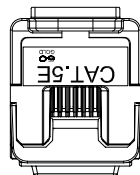
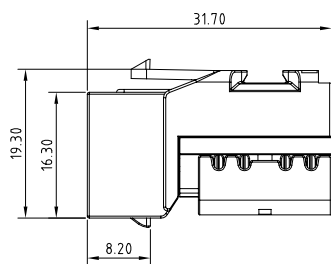
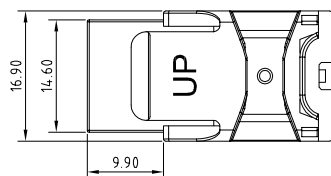


WIRE CAP

IDC MODULE



## ASSEMBLY DIMENSION



## COMPONENTS

ITEM	PART NAME	Q'TY
4	IDC MODULE	1
3	WIRE CAP	1
2	INSERT MODULE	1
1	JACK HOUSING	1

## TRANSMISSION PERFORMANCE

Meet all requirements specified in connecting hardware requirement of ANSI/TIA-568-C.2, Category 5e

## ELECTRICAL

Electrical Insulation Resistance : 500 MΩ min. @ 100V d.c

Dielectric Withstanding Voltage : 1000V d.c. or a.c. Peak Contact to Contact @ 60Hz for 1 minute.

## MECHANICAL

Insertion / Extraction Life : 750 Cycles Minimum

IDC Wire Gauge : 22 ~ 24 AWG

## PHYSICAL

Housing : High-Impact, Flame-Retardant Plastic, UL 94V-0

Spring Wire : Phosphor Bronze Alloy Plated With 50 micro-inch of Gold

IDC : Phosphor Bronze Alloy With 100 micro-inch 100% Sn Alloy

UNLESS OTHERWISE SPECIFIED:  
TOLERANCES

INCH	MM	ANGULAR
.X ± .016	.X ± 0.2	X ± 1°
.XX ± .008	.XX ± 0.1	.X ± .5°
.XXX ± .004		

MATERIAL

SURFACE

FINISH

PROJECT ID  
16H-U5-02BL / WTFILE  
Z4887.dwgDRAWN  
Nick

CHECK

APPROVED

DATE  
04/06'09TITLE  
成品圖 FOR D341SIZE  
A4DRAWING NUMBER  
Z4887

PART NUMBER

REV  
AUNIT  
mmSHEET  
1 OF 1